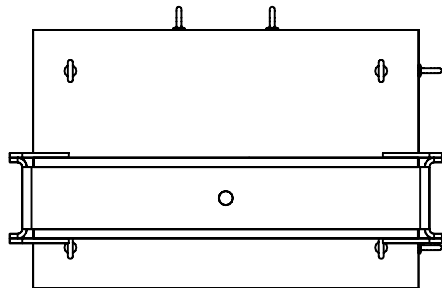
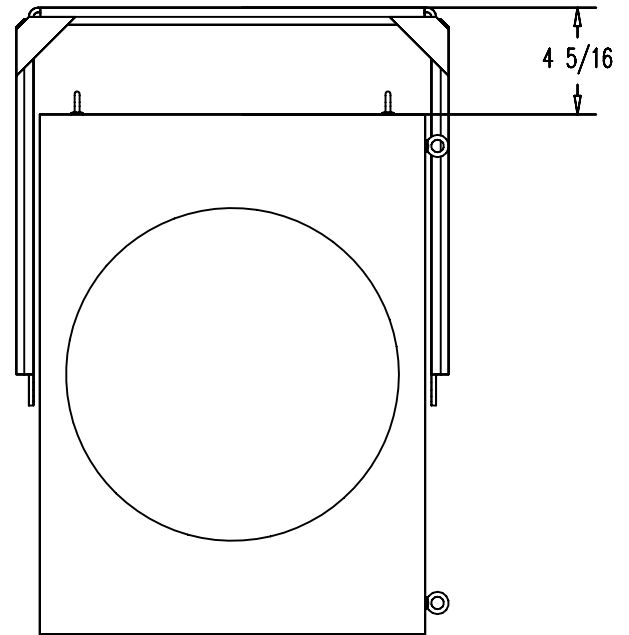


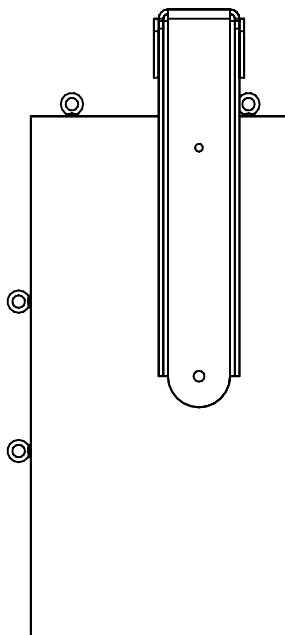
TOP VIEW  
SCALE: 1-1/2" = 1'



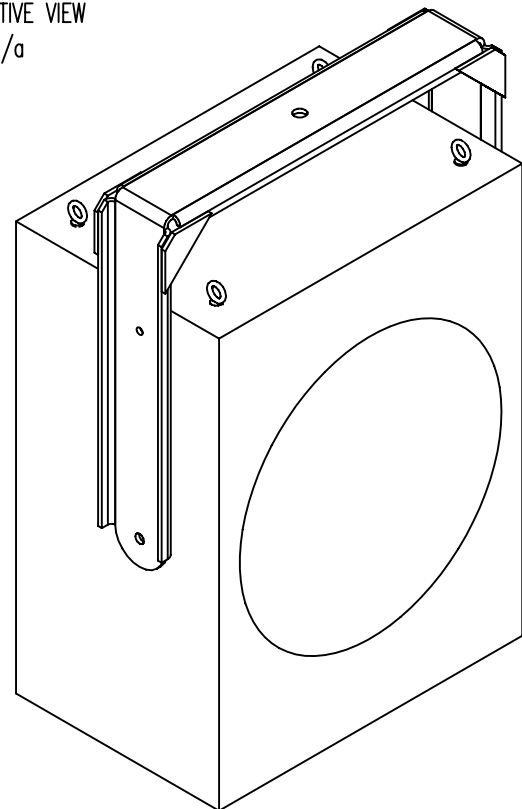
FRONT ELEVATION  
SCALE: 1-1/2" = 1'



SIDE ELEVATION  
SCALE: 1-1/2" = 1'



PERSPECTIVE VIEW  
SCALE: n/a



NOTES:

1. FABRICATION TOLERANCES ARE  $\pm 1/16"$ .
2. ALL EYEBOLTS SHOULD BE TURNED SO THAT THE LOAD IS IN THE PLANE OF THE EYE.